

introducing
Punch.ev



**beyond
— everyday**

beyond — design



Dive into the world of Punch.ev and discover a design philosophy that goes beyond the ordinary. Our focus on aesthetics transforms every journey into a visually enchanting experience, making each drive truly extraordinary.



— exterior



smart — digital DRLs

Be it day or night, stand out as you go beyond.



auto LED — projector headlamps

Go beyond with hassle-free auto headlamps for crystal clear visibility even at night.



sequential front — side indicators

Add a touch of class to every turn you make.

frunk¹ —

Level up your storage game with the Frunk – a front storage designed for all your essentials.



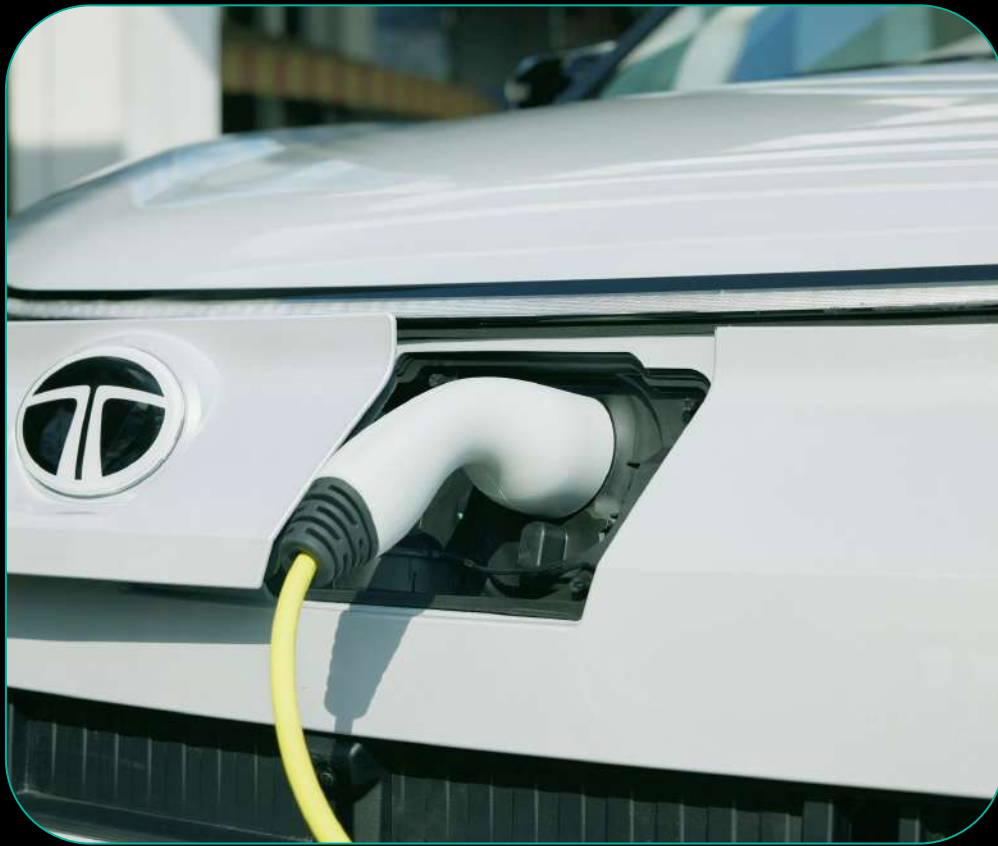
electric ORVM with — auto fold

Add style and function with mirrors that automatically fold.

front LED fog lamps with — cornering function

Navigate with confidence using advanced Front LED Fog Lamps with cornering function.





**electric front
— charging lid**

Power up in style.

**shark — fin
antenna**

Amp up style and
functionality with the
smart Shark Fin Antenna.



**R16 diamond
— cut alloys**

Roll in style beyond
everyday with R16
Alloy Wheels.



— interior



digital — dashboard

Premium experience with multi layered dashboard and phygital touch-points.



smart digital — steering wheel

Elevate the in-cabin experience with Digital Steering Wheel with illuminated logo at the centre.



jeweled — control knob

Add a touch of finesse to every shift with the stylish Jewel Control Knob.

phygital — control panel

Physical and digital controls integrated for an ergonomic and aesthetic appeal.



steering — mounted controls

For a focused driving experience.





mood — lights

Go beyond just playing music. Set your mood and sync seamlessly with the rhythm of your favourite track.

illuminated cooled — glove box

Keep things cool while you're on the go.



auto — dimming IRVM

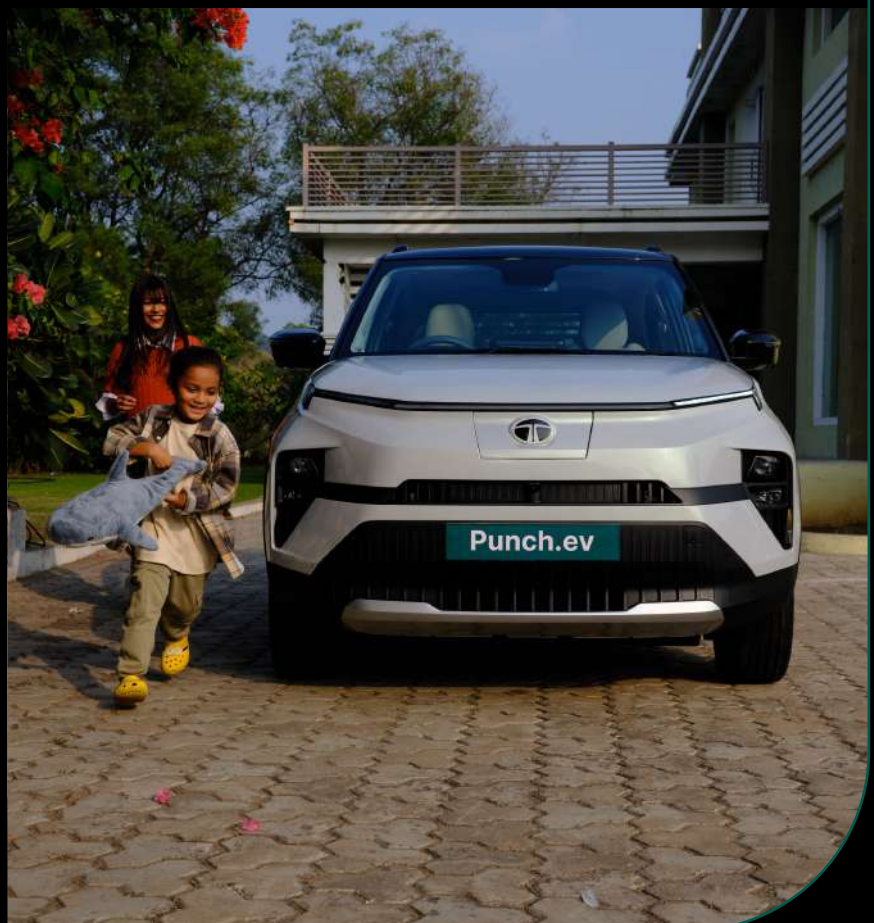
Say no to distracting flashes.



beyond — safety



Introducing Punch.ev, your reliable companion ensuring safety as you venture beyond everyday. Because with Punch.ev, safety is your constant travel mate on the road less ordinary.





360° surround view — camera system

Park easy with eyes all around. The 360° Surround View Camera System gives you a perspective beyond everyday .

blind spot — view monitor

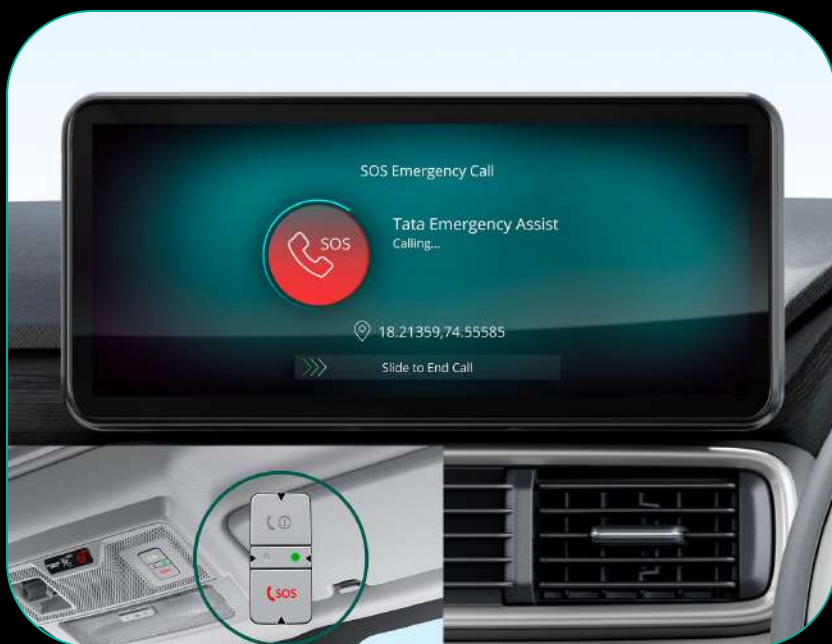
Boost up your visibility and go beyond.



EPB with — auto hold

Simply enhance safety and convenience on your busy city drives.





SOS calling — function###

A feature we hope you'd never have to use.

6 — airbags

Stay protected with the safety cocoon of 6 Airbags as standard.



hill — descent control

Navigate downhill confidently with Hill Descent Control.

hill — hold control

Conquer uphill terrains effortlessly with Hill Hold Control.



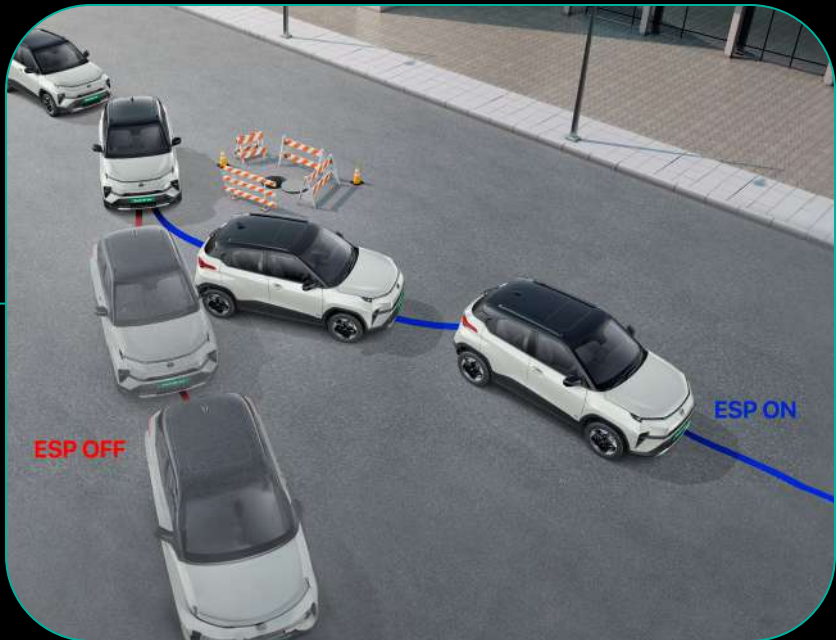


all 4 disc — brakes

Enhance braking efficiency for more control.

ESP —

Drive confidently with Electronic Stability Program (ESP) that comes standard in Punch.ev.



ISOFIX —

Secure ISOFIX anchorage for added child safety.

puncture — repair kit

User friendly compact Puncture Repair Kit for added convenience.



beyond — comfort



Immerse yourself in the effortless comfort of Punch.ev. Because every journey deserves that touch of ease, and with Punch.ev, we've made it your everyday comfort while you go beyond.





air purifier with — AQI display

Thanks to the Air Purifier you can now make sure you breathe clean and fresh air.



front ventilated — seats

Comfort takes centre stage with ultra bolstered Ventilated Front Seats.



USB type C — fast charging port (45W)

Power up all your gadgets while on-the-go.

90° opening — doors

Walking in and out of your car has never felt easier with 90° Opening Doors.



voice assisted — electric sunroof

Invite the sun to your journeys by day, and the moon to your escapades at night.

cruise — control

Enjoy relaxed driving with Cruise Control for journeys that take you beyond.





rain — sensing wipers

Eliminate the hassle of unpredictable showers with Rain Sensing Wipers.

rear wiper and — auto defogger

Nothing should come in between you and an unhindered driving experience.



4 speakers & — 2 tweeters

Immerse yourself in quality sound with a system featuring 4 Speakers and 2 Tweeters.

366 litre — boot space

For all your belongings and beyond. We've got room for all of it!



beyond — technology



Discover the groundbreaking tech that powers Punch.ev and redefines the limits of innovation. Because for us, it's not just about pushing boundaries; it's about enhancing your journey with thoughtful advancements.





Arcade.ev — app suite~

Arcade.ev will definitely spice up the entertainment factor in your already great in-car experience.



26.03 cm digital — cockpit

The intuitive Digital Cockpit, with multi-dial view.



26.03 cm HD infotainment — by HARMAN

Enjoy an immersive experience with the 26.03 cm HD Infotainment System by HARMAN.

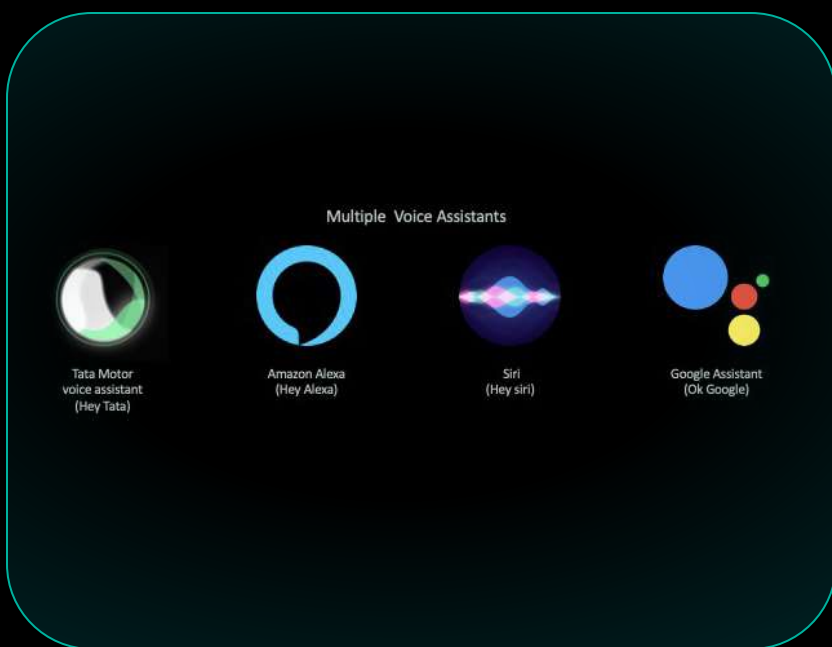
wireless Android Auto™ & — Apple CarPlay™

Stay connected wirelessly with Android Auto™ and Apple CarPlay™.



multiple — voice assistants ("Hey Tata", Alexa, Siri, Google Assistant)

Interact seamlessly with Multiple Voice Assistants.



wireless — smartphone charger

Don't get tangled up in wires. Power up your devices with the Wireless Smartphone Charger.



beyond— performance



Unleash the dynamic performance that resides within the heart of Punch.ev, where power and efficiency converge to transcend the ordinary driving experience.





paddle shifters for multi — mode regen

Enjoy single pedal like drive while adding range to your journey.



multi drive modes — eco, city & sport

Match your drive with your mood. Eco, City, or Sport, choose as you like.

acti.ev — architecture

Unparalleled efficiency powered by the cutting-edge acti.ev Architecture.



liquid cooled — IP67 battery pack

Long lasting battery, suited for Indian conditions.



power — electronics

Smart algorithms to control vehicle electronics.



motor — type

Enjoy the efficiency of a Permanent Magnet Synchronous Motor.

power —

Experience the thrill of 90 kW power, delivering a performance beyond everyday.

instant — torque

Feel the electrifying rush of 190 Nm of instant torque and accelerate beyond everyday.



beyond — power



Your journey with Punch.ev, is empowered with user-friendly charging capabilities. It ensures your charging experience is beyond the usual, but as seamless as plugging in your everyday devices.



- **DC — fast charger**

Charge quickly. SOC 10% - 80% in 56[▲] minutes.

- **7.2 kW AC home — wall box charger**

Charge conveniently at home. SOC 10%-100% in 3.6[▲] hours and 5[▲] hours for Long Range.

- **AC home — wall box charger**

Charge efficiently. SOC 10%-100% in 9.4[▲] hours and 13.5[▲] hours for Long Range.

- **15A portable — charger**

Charge anywhere from a 15A socket. SOC 10%-100% in 9.4[▲] hours and 13.5[▲] hours for Long Range.

Punch.ev - technical specifications and features

	Punch.ev	Punch.ev LR
electric drivetrain		
Motor (Type)	Permanent Magnet Synchronous Motor	
Electric Motor Power (kW)	60	90
Electric Motor Torque (Nm)	114	190
Multi Drive Modes	Multi Drive Modes - Eco, City & Sport	
Battery Pack (kWh)	25	35
Thermal Management System	Liquid Cooled System	
Ingress Protection for Motor & Battery Pack	IP67	
Acceleration (0-100 km/h in sec)	13.5 [^]	9.5 [^]
Emission	Zero Tailpipe Emission	
smart drive features		
Smart Regenerative Braking	Multi-Mode Regenerative Braking 4 Levels (Level 0 - 1 - 2 - 3) 0 - No Regen 3 - Max Regen	
Paddle Shifters to Control Regen Modes	✓ (Not available in Smart)	✓
Customizable Single Pedal Drive	✓	✓
dimensions		
Length x Width x Height (mm)	3857 × 1742 × 1633	
Wheelbase (mm)	2445	
Unladen Ground Clearance (mm)	190	
Boot space (Litre)	366	
steering		
Steering	Electrically Power Assisted	
Turning Circle Radius (m)	<5	
brakes		
Front, Rear	Front - Disc, Rear - Drum	All - Disc
suspension		
Front Suspension	Independent, Lower Wishbone, McPherson Strut with Coil Spring	
Rear Suspension	Semi-independent Twist Beam With Coil Spring And Shock Absorber	
wheels & tyres		
Size	185/70 R15	195/60 R16
	195/60 R16 (Only in Empowered)	
Low Rolling Resistance Tyres	✓	✓
charging		
Charging Standard	CCS2	
Portable Charging Cable	Yes	
Charging Options	Home, 3.3 kW AC Wall Box, 7.2 kW AC Wall Box, DC Fast Charger	
Charger Type Included	3.3 kW AC Wall Box	3.3 kW or 7.2 kW AC Wall Box
Estimated Regular Charging Time (SOC 10% to 100% from any 15A plug point)	~ 9.4 [^] hr	~ 13.5 [^] hr
Estimated AC Fast Charging Time (SOC 10% to 100% from 7.2 kW AC Fast Charger)	~ 3.6 [^] hr	~ 5 [^] hr
Estimated DC Fast Charging Time (SOC 10% to 80% from 50 kW DC Fast Charger)	~ 56 [^] mins	~ 56 [^] mins
warranty		
Battery Pack and Motor Warranty	8 Year or 1,60,000 km (whichever is earlier)	
Vehicle Warranty	3 Year or 1,25,000 km (whichever is earlier)	
driving range		
Certified Full Charge Range (as per MIDC Cycle) (km)	315 [#]	421 [#]

smart

smart

- > LED Headlamps
- > Smart Digital DRLs
- > Smart Digital Steering Wheel
- > Fully Automatic Temperature Control
- > Phygital Control Panel
- > Air Purifier
- > Multi-mode regen
- > 6 Airbags
- > Electronic Stability Program
- > ABS with EBD
- > Hill Hold Assist
- > ISOFIX
- > iTPMS
- > Rear Parking Sensor
- > Power Window (Front Doors)
- > Impact Sensing Auto Door Unlock
- > 2 Drive Modes - City/Sport
- > R15 Steel Wheels with Cover
- > Height Adjustable Driver Seat
- > Illuminated Cooled Glovebox
- > Electric Tailgate Release
- > ZConnect^{##} & Smart Watch Connectivity^{^^}
- > 3.3 kW AC Wall Box Charger

smart +

- in addition to smart

- > Prismatic IRVM
- > Steering Mounted Controls
- > Paddle Shifters for Multi-mode regen
- > Power Window (All 4 doors)
- > 17.78 cm Infotainment by HARMAN
- > 4 Speakers + 2 Tweeters
- > Android Auto™ and Apple CarPlay™

adventure

adventure and adventure LR

- in addition to smart+

- > LED Projector Headlamps
- > Sequential Front Side Indicators
- > Welcome & Goodbye Sequence
- > Cruise Control
- > Push Button Start/Stop (PEPS)
- > Electric Adjustable ORVM
- > Front Fog LED Lamps
- > with Cornering Function
- > Follow Me Home Headlights
- > Jeweled Control Knob (LR Only)
- > Electronic Parking Brake with Autohold (LR Only)
- > Multi Drive Modes (City/Sport/Eco) (LR Only)
- > Hill Descent Control (LR Only)
- > All 4 Disc Brakes (LR Only)
- > Hill Hold Control (LR Only)
- > R16 Hyperstyle Steel Wheel (LR Only)
- > Option of 7.2 kW AC Fast Charger (LR Only)

adventure s and adventure s LR

- in addition to adventure & adventure LR

- > Electric Sunroof
- > Auto Headlamps
- > Rain Sensing Wipers
- > Dual Tone Roof

empowered

empowered and empowered LR

- in addition to adventure and adventure LR

- > Smart Charging Indicator
- > 26.03 cm HD Infotainment by HARMAN
- > 17.78 cm Instrument Cluster
- > Camera Based Reverse Park Assist
- > Rear Wiper and Auto Defogger
- > Electric ORVM with Auto Fold
- > Auto Dimming IRVM
- > Auto Headlamps
- > Rain Sensing Wipers
- > Roof Rails
- > Front Armrest
- > USB Type C Fast Charging Port (45W)
- > Shark Fin Antenna
- > R16 Diamond Cut Alloys
- > Air Purifier with AQI Display
- > Wireless Android Auto™ and Apple CarPlay™
- > Rear Armrest with Cup Holders
- > SOS Calling Function###
- > Leatherette Wrapped Steering Wheel

empowered s & empowered s LR

- in addition to empowered & empowered LR

- > Voice Assisted Electric Sunroof
- > Mood Lights

empowered + and empowered + LR

- in addition to empowered & empowered LR

- > 360° Surround View Camera System
- > Blind Spot View Monitor
- > Arcade.ev App Suite~
- > Leatherette Seats
- > Front Ventilated Seats
- > Wireless Smartphone Charger
- > 26.03 cm Digital Cockpit
- > Navigation in Cockpit - Driver View Maps
- > Multiple Voice Assistants
("Hey Tata", Alexa, Siri, Google Assistant)

empowered +s and empowered +s LR

- in addition to empowered+ & empowered+ LR

- > Voice Assisted Electric Sunroof
- > Mood Lights